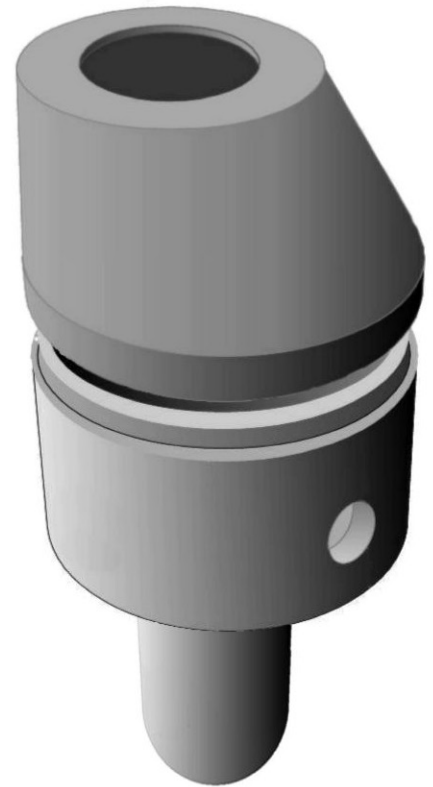
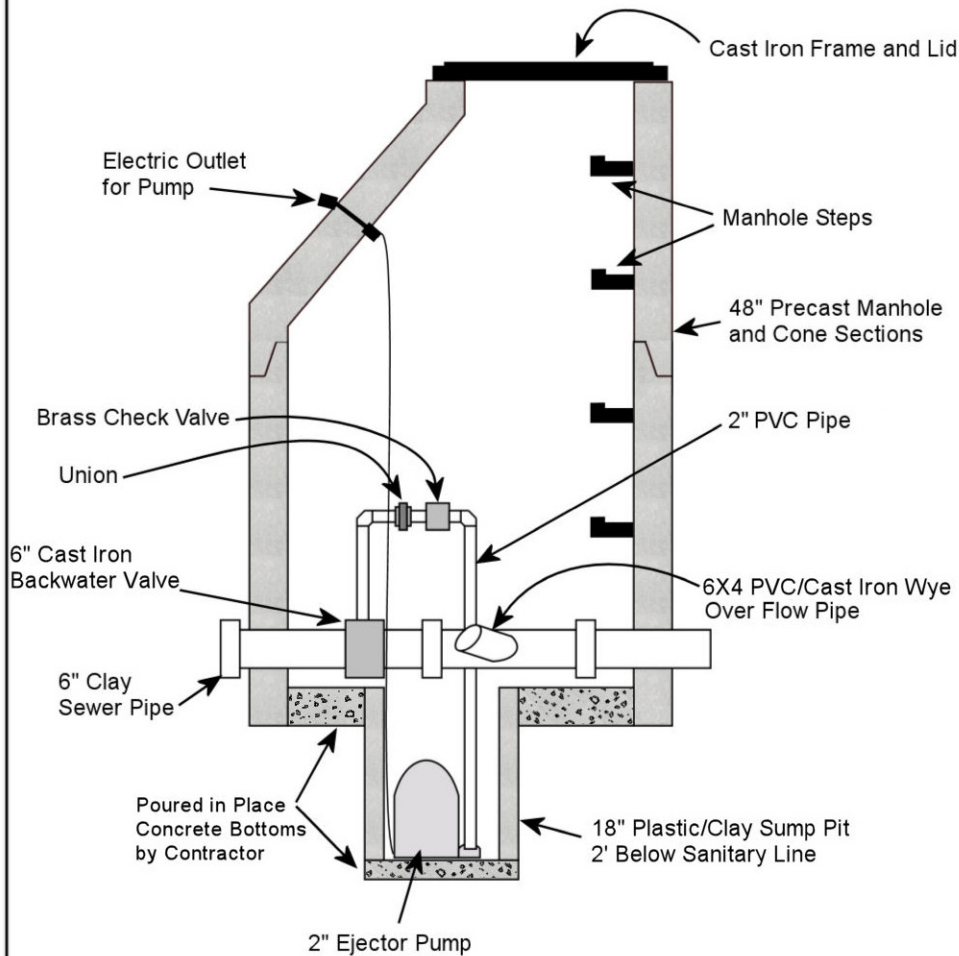


## 48" Precast Manhole Flood Control



### Materials

CONCRETE: 4000 PSI.

WALL REINFORCING:

per ASTM C-478 Standard

PLASTIC/CLAY SUMP PIT

VITRIFIED CLAY SEWER PIPE and FITTINGS

2" BRASS CHECK VALVE

6" CAST IRON BACKWATER VALVE

2" PVC PIPE and FITTINGS

EJECTOR PUMP

-No Scale-

All dimensions subject to allowable  
specification tolerances.

**48" Precast Manhole Flood Control**

**VOLLMAR**  
CLAY PRODUCTS COMPANY  
1-773-774-1234